



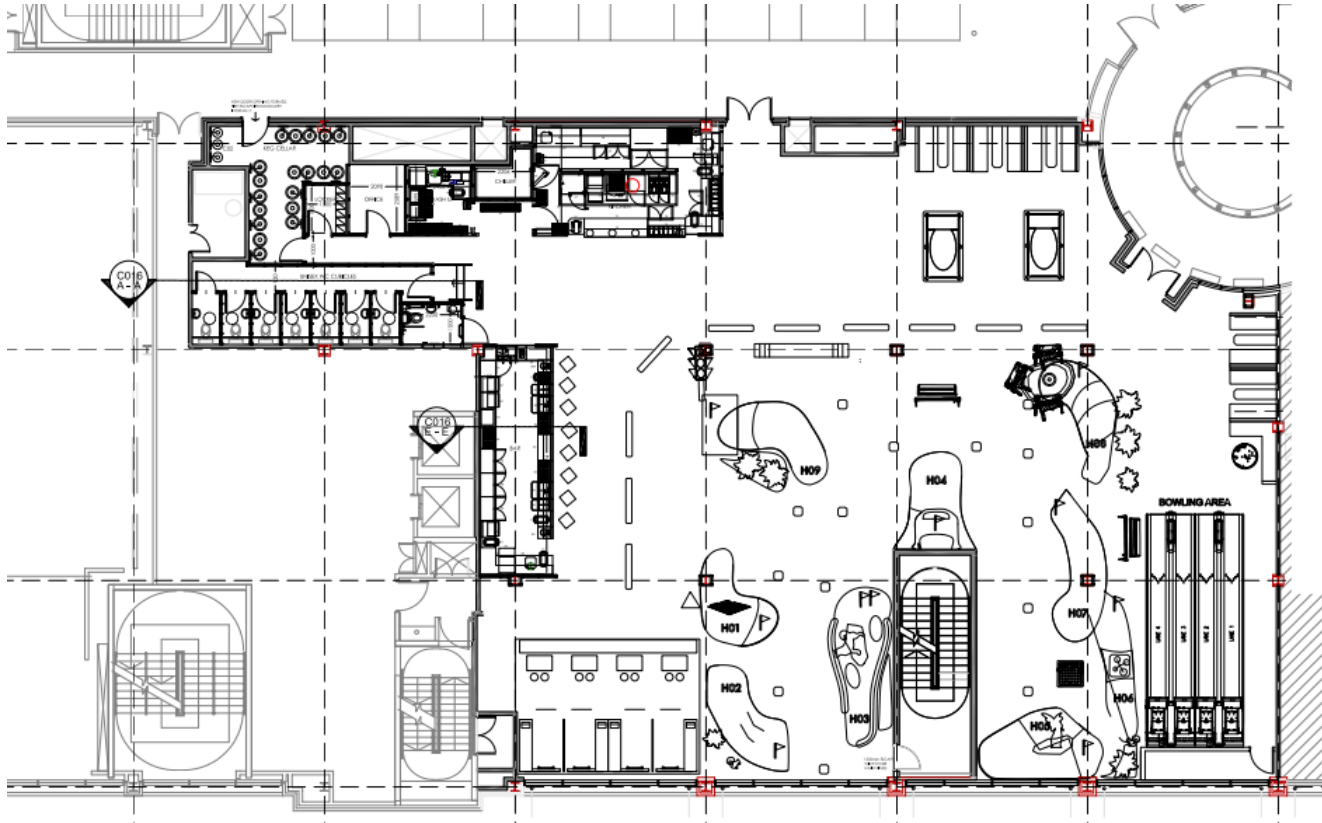
PREMIUM FULLY FITTED COMPETITIVE SOCIAL, BAR AND RESTAURANT OPPORTUNITY

SOL, NORTHAMPTON





UNIT OVERVIEW



Area: 7,956 sq ft

High quality fully fitted unit (less than three years old), includes:

Premium Bar

Kitchen / restaurant facility

Crazy golf

Darts

Miniature bowling

Floor to Ceiling Height of 3.2m

Rates Payable: £23,000 (tbc)

Service Charge: £47,012pa

Rent: On Application

FIRST FLOOR

